

**PRODUCT LINE**

Fishing &amp; Intervention | Junk Catchers

**PRODUCT**

Heavy Duty Ditch Magnets

**OVERVIEW**

The Logan Heavy Duty Ditch Magnet will capture all magnetized metals and effectively trap and remove metal particles from drilling mud missed by the shale shaker.

**USES**

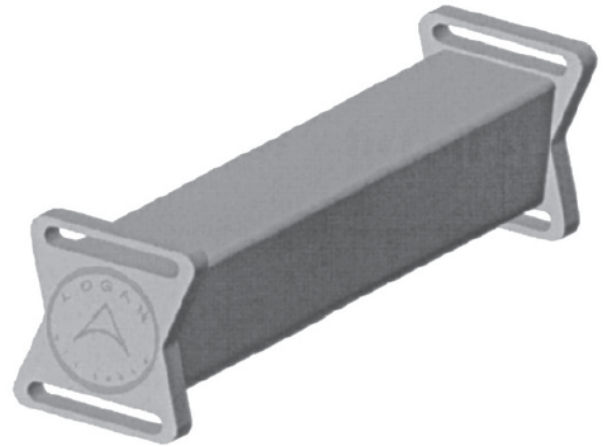
The Logan Heavy-Duty Ditch Magnet is particularly valuable for the removal of mill cuttings and debris that cause wear on mud pumps and other equipment during milling operations. It eliminates the problems caused by harmful debris returned downhole and is equally effective in both washover and fishing jobs.

**CONSTRUCTION**

The clean, simple design eliminates the use of trays, gates, and other extra equipment. The magnet is encased in stainless steel and has integral handles at each end for lifting.

**OPERATION**

No special instructions are required to operate the Logan Heavy Duty Ditch Magnet. The ditch magnet is most effective when it is suspended by soft line in the mid ditch before the shale shaker, or in the shaker discharge. Depending on milling rate, the unit should be cleaned several times per day with fresh or salt water. The unit may be cleaned less often when cuttings come at a slow rate.



Length (inches)		18	24	36
Complete Assembly	Logan Part No.	305-018	305-024	305-036
	Bowen No.	-	152761	79162
Keeper	Logan Part No.	DMK-018	DMK-024	DMK-036

Innovex reserves the right to change or discontinue designs without prior notice.

Note: Magnets shipped via air freight must include a Keeper.

**When ordering, please specify:**

Name and number of magnet