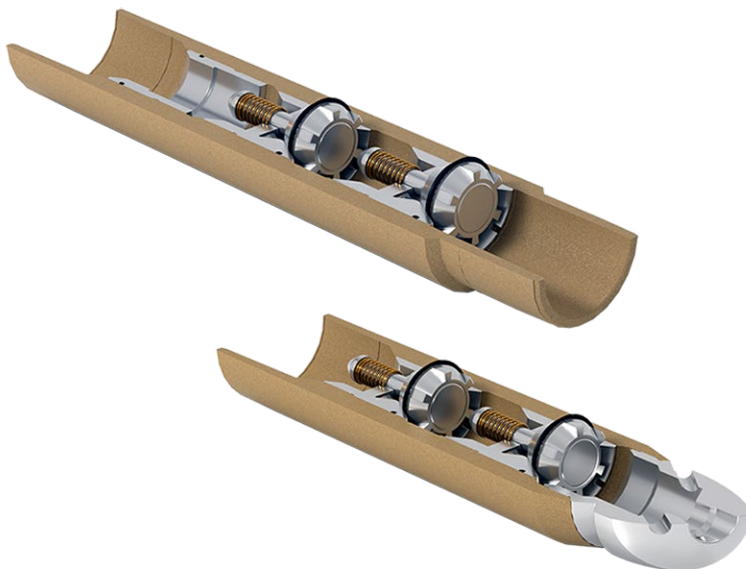


Innovex's in-house engineered **338 Ultra Mag Valve 2.0** is an all-aluminum float valve developed for the most severe downhole applications. Whether floating production casing or facing extreme bottom-hole temperature and/or hydrostatic pressure, the bulletproof 338 Ultra Mag Valve 2.0 will hold up where others fail. Tested up to 18,000 psi at 400°F with nitrogen gas.



SPECIFICATIONS

Size Range: **4.500 and larger**

API 10F Classification: **D36 R10 T400 P15**

Max Pressure¹ @ 400°F: **15,000 psi**

Min Flow Area: **3.38 in²**

Max Flow Rate: **15 bpm for 8 hrs**

Flow Endurance: **10 bpm for 36 hrs**

¹Actual pressure ratings depend on size, thread, and grade

For more information: visit www.innovex-inc.com or contact your local sales office
Domestic and international patents and trademarks granted and/or applied for, where applicable
REV – AUGUST 2025

**NO
BARRIERS**